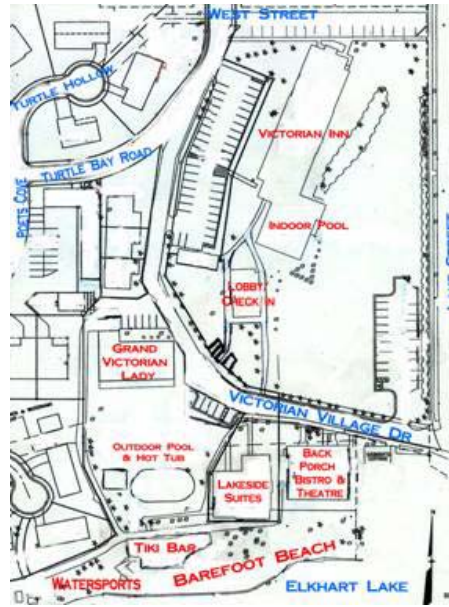


**Victorian Village Resort Map and Driving Directions**  
**920-876-3323 or Toll Free 1-877-860-9988**



**DRIVING DIRECTIONS**

**SHEBOYGAN:** Hwy 23 W to Hwy 67N to Elkhart Lake. Turn left on Rhine St. and left on Lake St. (30 min)

**MLWAUKEE:** I43 N to Hwy 57 N (to Plymouth). North to Hwy 23 W to Hwy 67 N to Elkhart Lake. Turn left on Rhine St. and left on Lake St. (1 hour)

**CHICAGO:** I94 N to I43 N to Hwy 57 N (to Plymouth) to Hwy 23 W to Hwy 67 N to Elkhart Lake. Turn left on Rhine St. and left on Lake St. (2 . 5 hours)

**MANITOWOC:** Hwy 151 W to Chilton. Left on Hwy 67 S to Elkhart Lake. Turn right on Rhine St. and then left on Lake St. (45 min)

**GREEN BAY:** Hwy 57 S to Hwy 67 S to Elkhart Lake. Turn right on Rhine St. and left on Lake St. (1 hour)

**APPLETON:** Hwy 10 E to Hwy 57 to Kiel. Take Hwy 67 S to Elkhart Lake. Turn right on Rhine St. and left on Lake St. (1 hour)

**FOND DU LAC:** Hwy 23 E to Hwy 67 N to Elkhart Lake. Turn left on Rhine St. and left on Lake St. (30 min)

**OSHKOSH:** Hwy 41S to Hwy 23 E to Hwy 67 N to Elkhart Lake. Turn left on Rhine St. and left on Lake St. (45 min)

**MADISON:** Hwy 151N to Hwy 41 to Fond du Lac. Hwy 23 E to Hwy 67 N to Elkhart Lake. Turn left on Rhine St. and left on Lake St. (2 hours)

**MINNEAPOLIS/ST. PAUL:** Take I94 E to Mauston, at Mauston take Hwy 82 to Hwy 23 E. Stay on Hwy 23 E to Hwy 67 N (Plymouth exit), to Elkhart Lake. Turn left at Rhine St, left on Lake St. (5 hours)

**\*\*\*Please note that Mapquest and other mapping programs do not give you correct directions\*\*\***